

Análisis Cuantitativo de Demanda

ELASTICIDADES

- Con Respecto a P_x : $\left| \frac{\Delta \% Q_x}{\Delta \% P_x} \right| \rightarrow \left(\frac{dQ_x}{dP_x} \right) \left(\frac{P_x}{Q_x} \right) \rightarrow$ Punto donde calculamos
- Con Respecto a Renta: $\left| \frac{\Delta \% Q_x}{\Delta \% R} \right|$
 - + : Normal
 - : Inferior.
- Cruzada: $\left| \frac{\Delta Q_x}{\Delta \% P_y} \right| \rightarrow \alpha_2 \left(\frac{P_y}{Q_x} \right)$
 - Complement: -
 - Sustitutivos: +

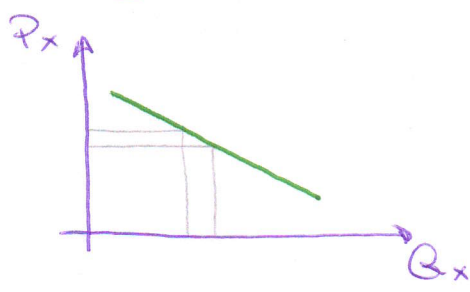
Pendiente

Lineal $Q_x = a + bP_x$

Loglineal $\ln Q_x = B_1 - B_2 \ln P_x$

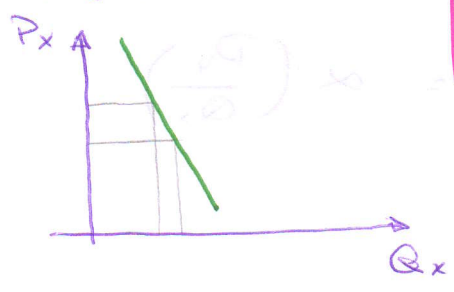
TIPOS

- Elastica -



$\downarrow P_x \rightarrow \uparrow IT$
 $Ed_{P_x} > 1$

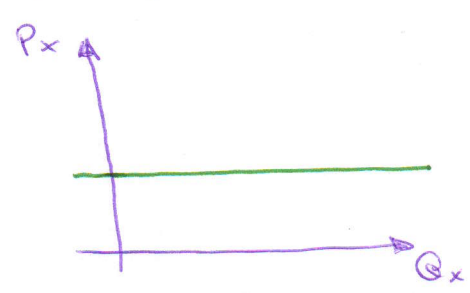
- Rígida -



$\uparrow P_x \rightarrow \uparrow IT$
 $Ed_{P_x} < 1$

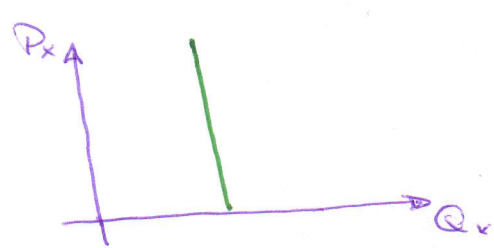
- CP \rightarrow - Elast.
- LD \rightarrow + Elast.
- + Sustit. \rightarrow + Elast.
- gasto \rightarrow - Elast.

- Completam. Elástica -



(Competencia Perfecta)
 $Ed_{P_x} = |\infty|$

- Completam. Rígida -



(Monopolio)
 $Ed_{P_x} = |0|$